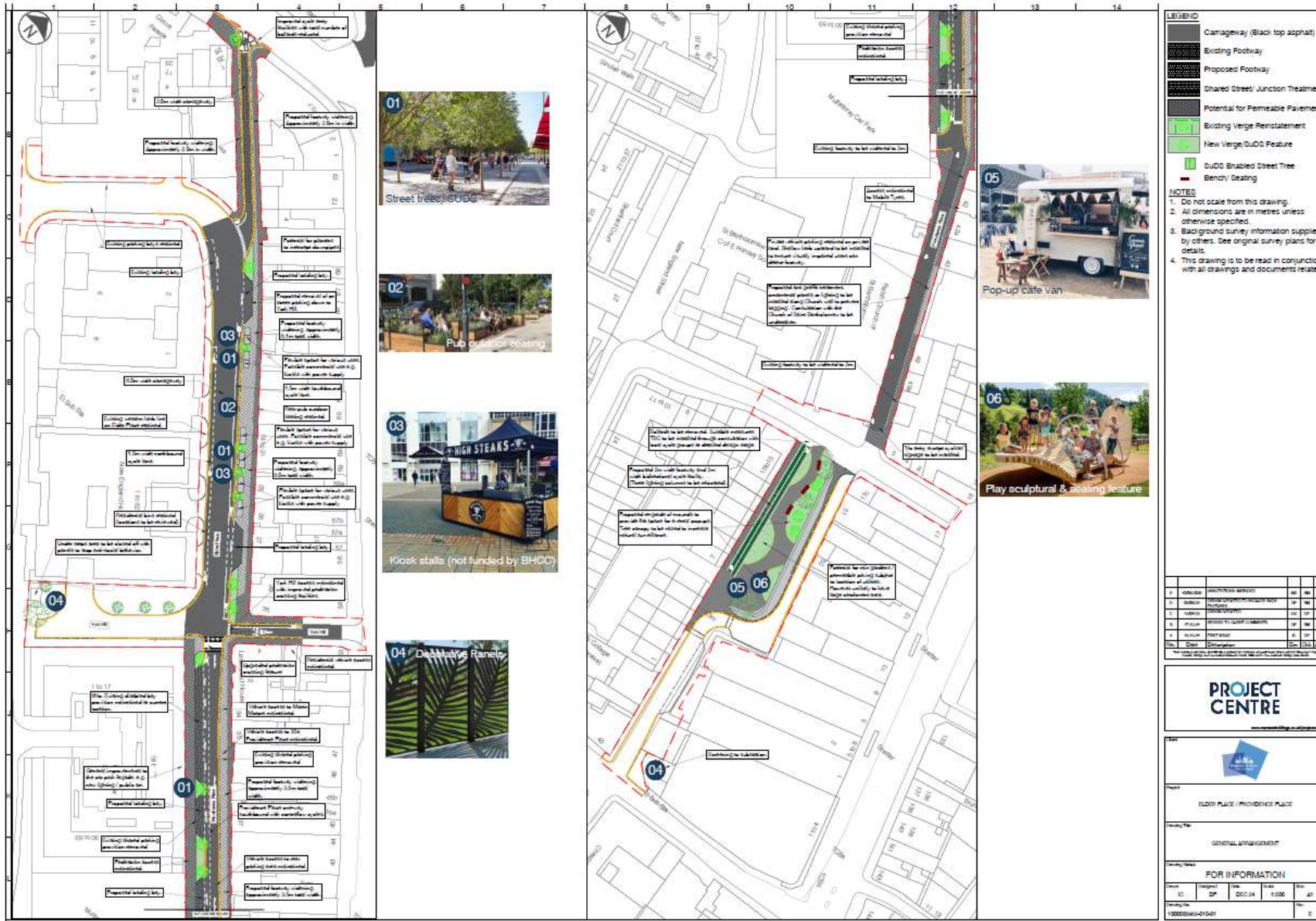


# Elder Place Corridor

## Concept Plan for Consultation

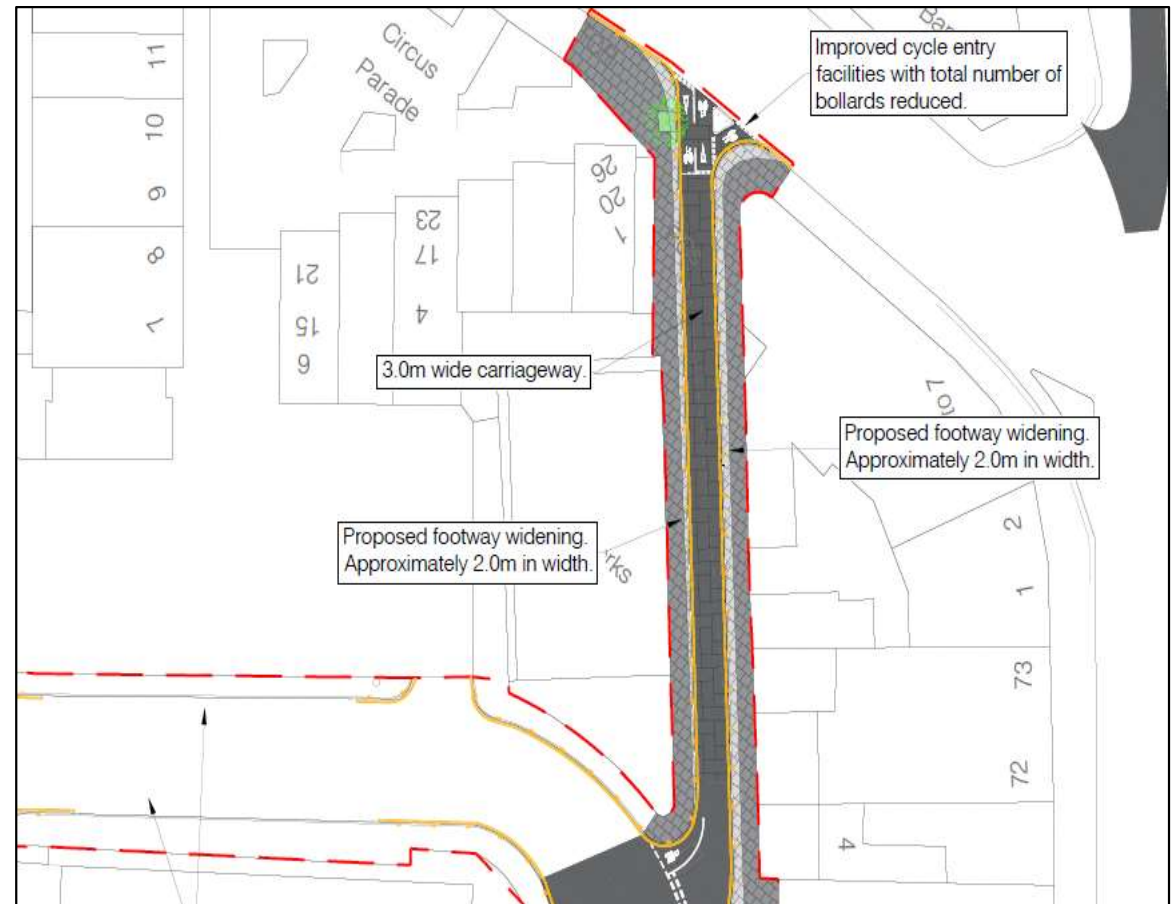


## Proposed Scheme



## Elder Place – northern end no through road

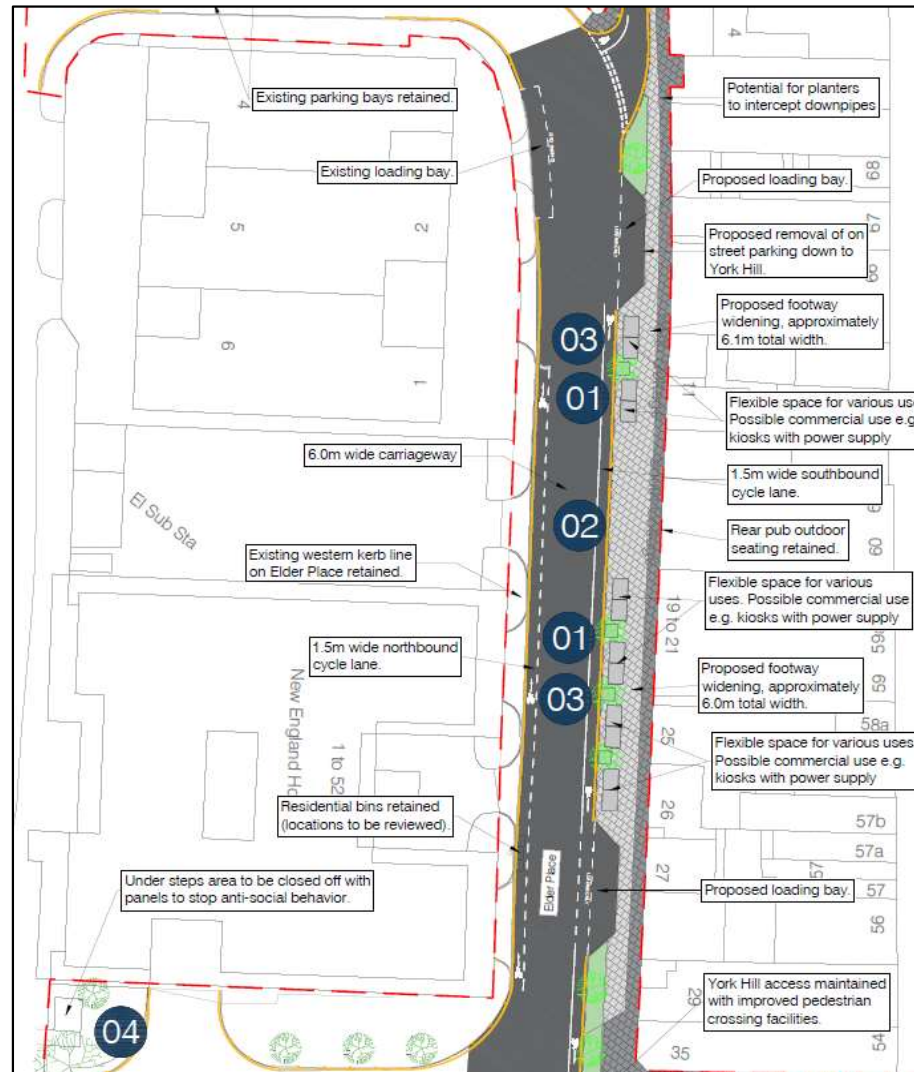
- Entry to the Corridor highlighted with signing / lighting / public art
- Bollards rearranged to enable easier passage by people on bike
- Footway on the both sides widened to 2m, providing a usable path for pedestrians
- Vehicular access maintained for servicing and deliveries
- New street lighting / public art / street bins to be provided along Corridor, location and numbers to be determined



# PROJECT CENTRE

## Elder Place – south to York Hill

- Removal of on-street parking to give space for widening of footway to around 6m wide
- On carriageway cycle lanes
- Create new flexible space for various uses, potentially events or commercial use such as pop up stalls / markets / kiosks with power supply
- Provision of two loading bays on the east side of the street for deliveries and servicing of businesses and residential units
- Retain pub outdoor seating area
- Incorporate areas of planting / soft landscape that can be SUDs compatible to help manage flood risks
- New street lighting / public art / street bins to be provided along Corridor, location and numbers to be determined

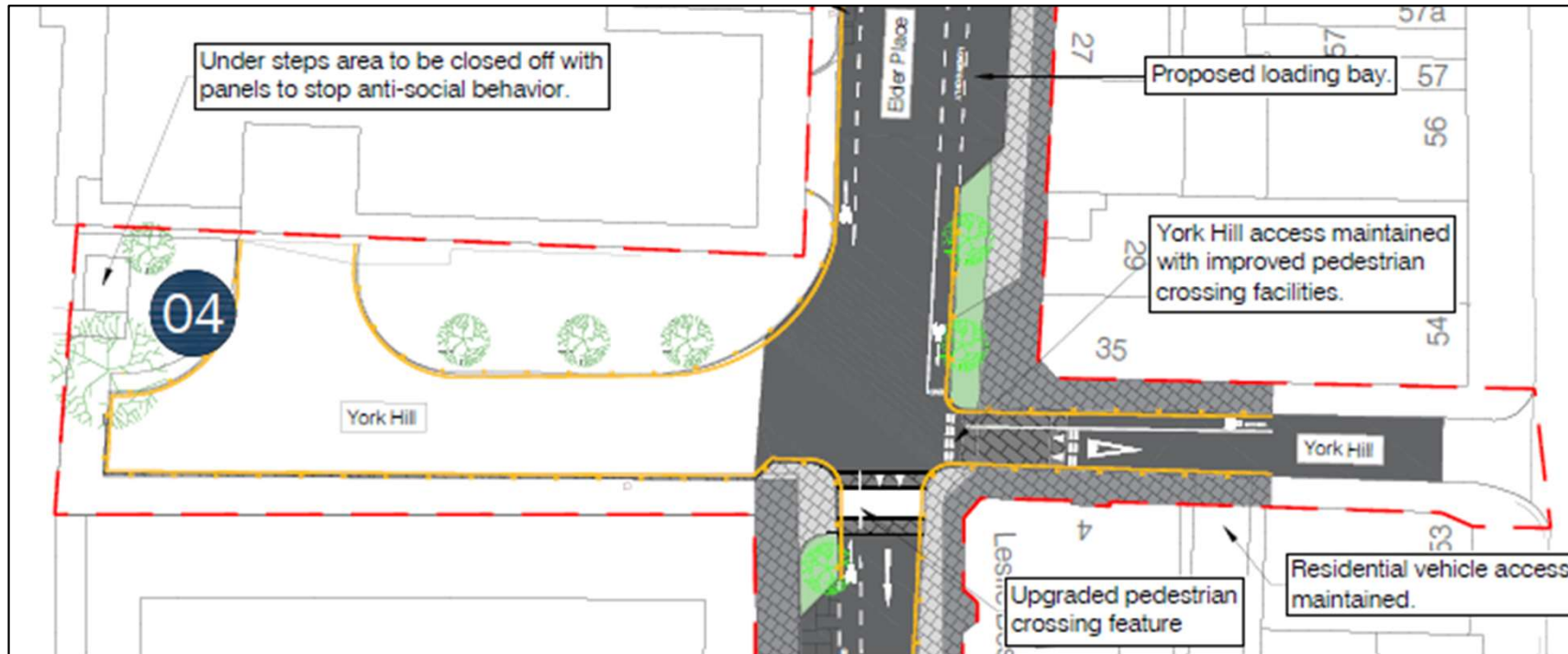


Photographs provided as illustrative examples only

Illustrative example of concept plan



## York Hill



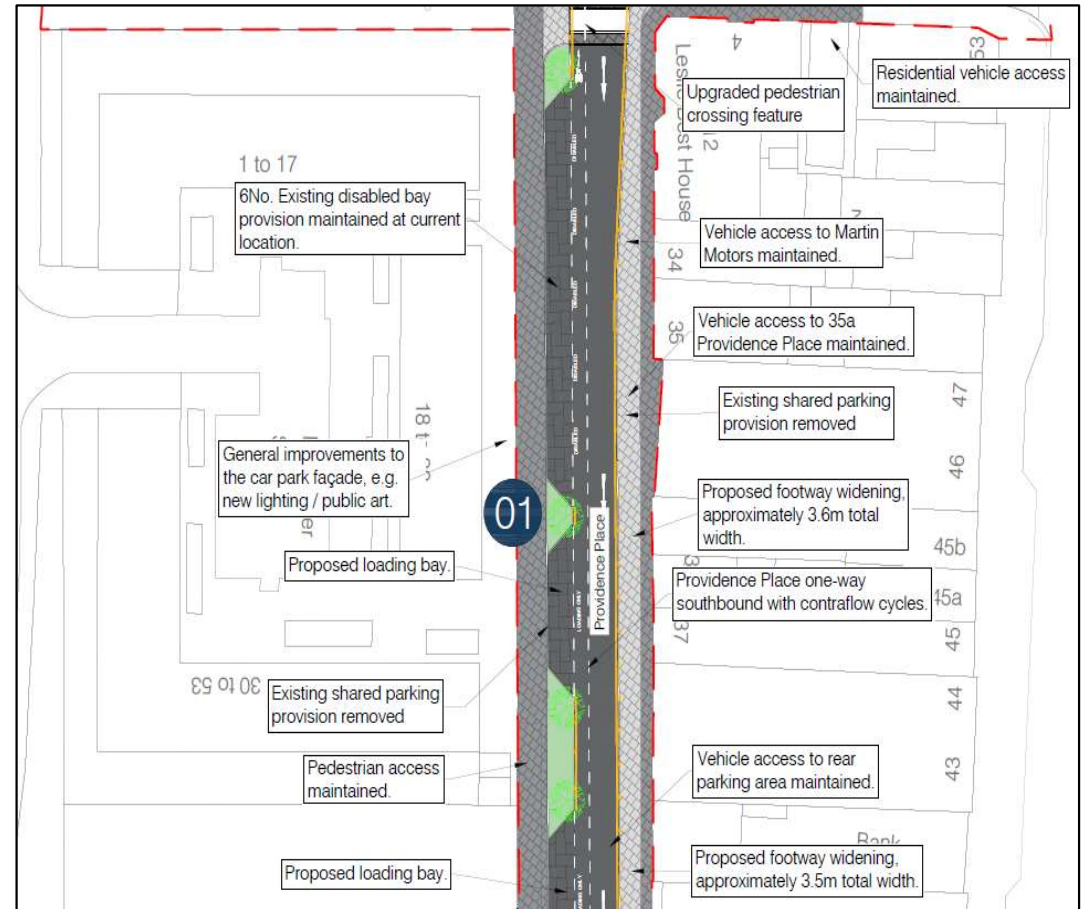
- Eastern end of York Hill remains open to through traffic as existing
- Western end of York Hill remains as existing pending retrofit or redevelopment of New England House
- Improved raised pedestrian crossing points over York Hill and Providence Place
- Enclosure of understairs area to discourage anti-social behaviour and potentially provide storage
- New street lighting / public art / street bins to be provided along Corridor, location and numbers to be determined



Photograph provided as illustrative examples only

## Providence Place - to London Road Car Park entrance

- Road to become one way southbound for general traffic, with contraflow cycling enabled
- Footway widened to around 3.5m on east side to provide continuous pedestrian route whilst maintaining access to businesses
- Disabled parking bays provided on western side, with the total number of bays same as existing
- Provision of two dedicated loading bays on the western side
- Trees / planting provided to break up parking / loading on the western side that can be SUDs compatible to help manage flood risks
- All existing vehicle accesses maintained
- New street lighting / public art / street bins to be provided along Corridor, location and numbers to be determined



Photograph provided as illustrative examples only

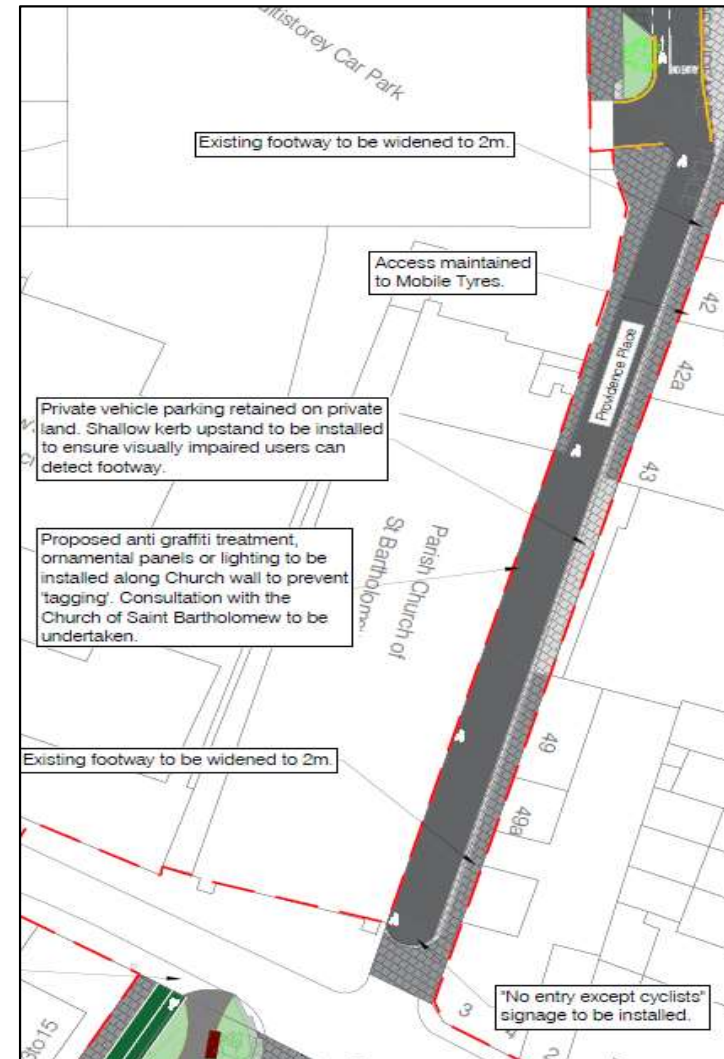
Street trees/ SUDS

Illustrative example of concept plan



## Providence Place - side of St Bartholomew Church

- Road to become one way southbound for general traffic, with contraflow cycling enabled
- Footway widened to around 2m on east side to make it easier for all people to navigate and use the route
- New street lighting / public art / street bins to be provided along Corridor, location and numbers to be determined



## Providence Place Gardens

- Maintenance of trees to raise canopy and improve natural surveillance
- Flattening of grass mounds to make the space more usable for events / pop up stalls
- Remove broken table tennis table and public art and repurpose area to provide space for pop up cafe van / public art / children's play
- New seating with improved access
- Provision of a wider 2-way cycle route in line with modern standards
- New street lighting / public art / street bins to be provided along Corridor, location and numbers to be determined



Photographs provided as illustrative examples only

Illustrative example of concept plan

